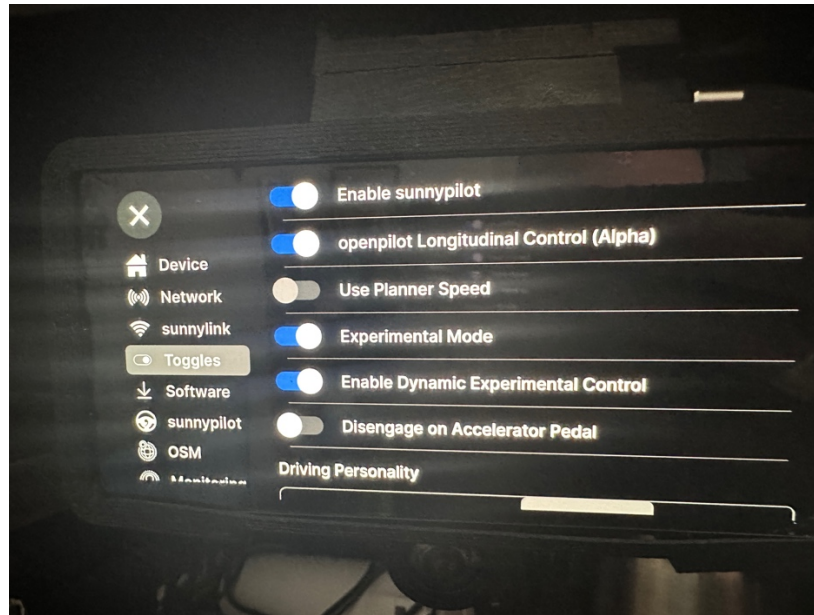


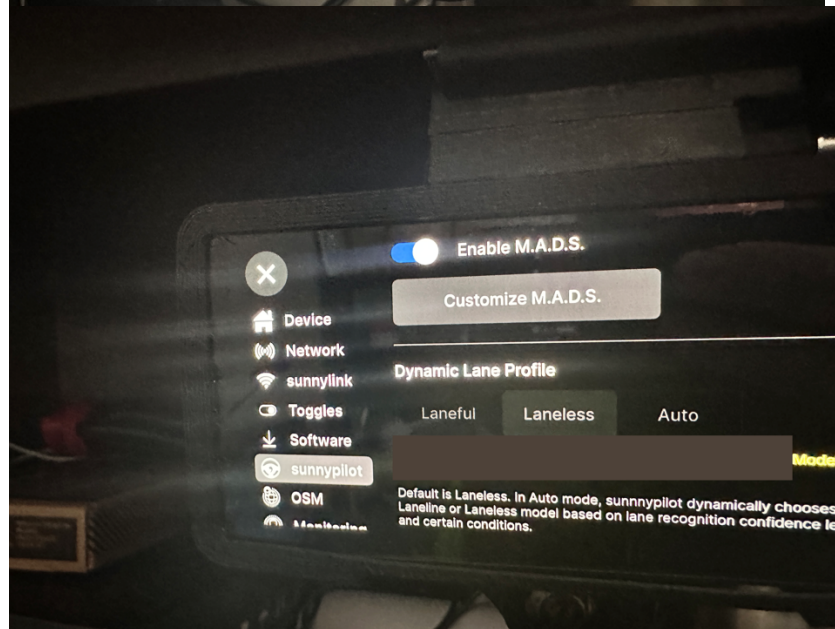
## Ford CANFD on bluepilot stable

Recommended steps for getting started with bluepilot on a CANFD Ford.

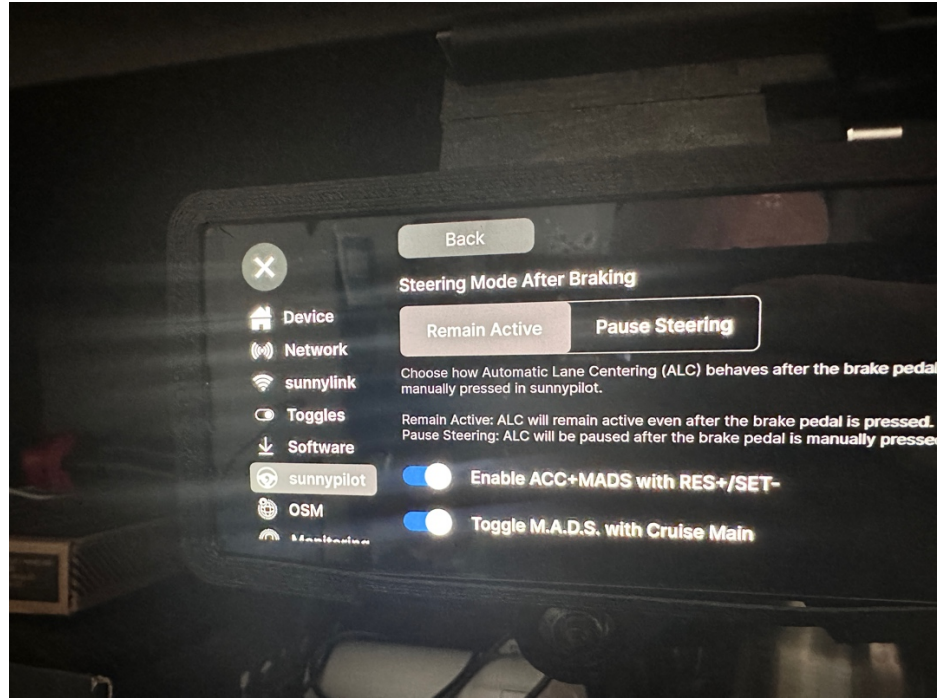
1. If your comma is brand new, skip to step 3
2. If your comma already has software installed on it, navigate in the menu to software, and click uninstall OpenPilot.
3. When prompted for a custom url to install from enter (case sensitive):
4. <https://bit.ly/bp-stable>
5. Once the installer is complete, connect the Comma in the car (if not already there) and cycle the engine on.
6. Ensure the camera goes active while the engine is on.
7. After 30 seconds, cycle the engine back off.
8. If you received a message about being in dashcam mode while the engine was on, proceed to step 8. If you received a calibration message to drive above 15mph proceed to step 9.
9. To force your vehicle to be recognized
  - a. while the car is off tap on the screen to wake up the comma
  - b. choose the settings gear icon from the top left
  - c. scroll down to vehicle on the left menu
  - d. from the upper right click on "select my vehicle"
  - e. scroll down to 2022-2023 F150 and select it.
  - f. Navigate out of the menu to the home screen. Go back through the menu to ensure that the selection was properly applied.
  - g. Unplug the comma for 30 seconds and plug back in.
  - h. Once booted turn on vehicle and check for calibration message.
10. Visit <https://github.com/sunnyhaibin/sunnypilot#driving-enhancements> for an overview of the many options available.
11. Below are screenshots of the recommended settings for those getting started with bluepilot:



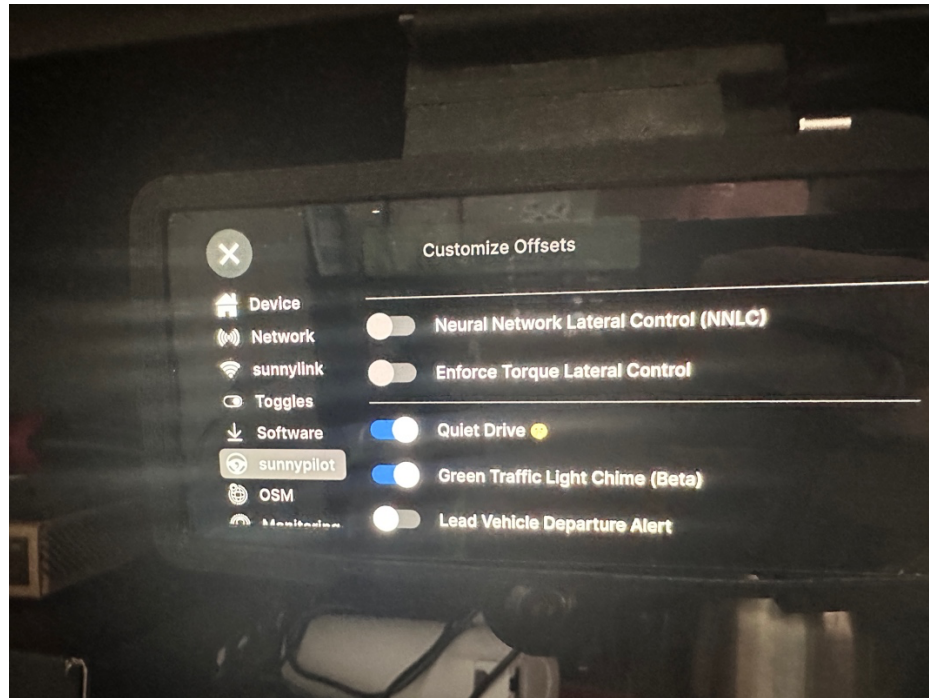
a.



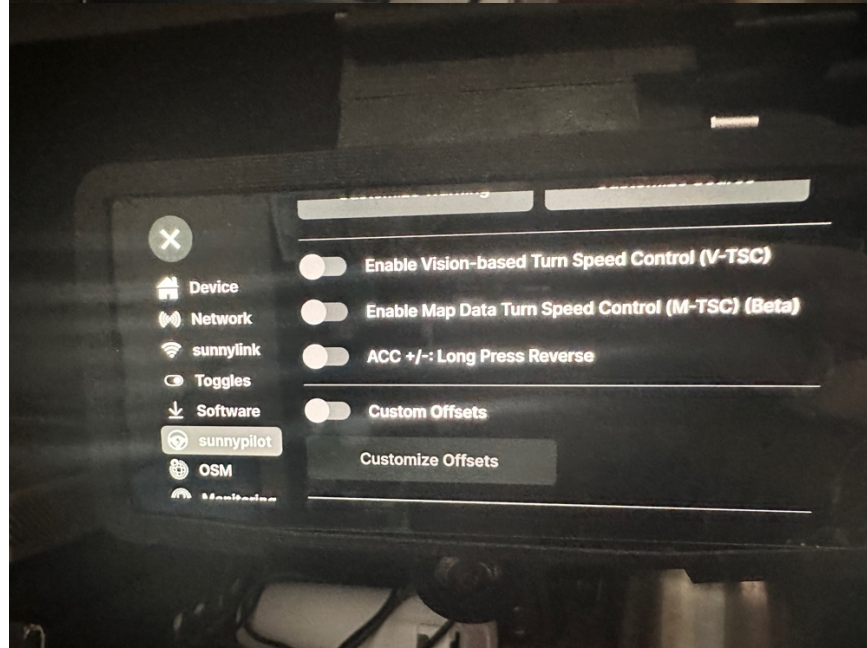
b. Inside customize MADS



C.

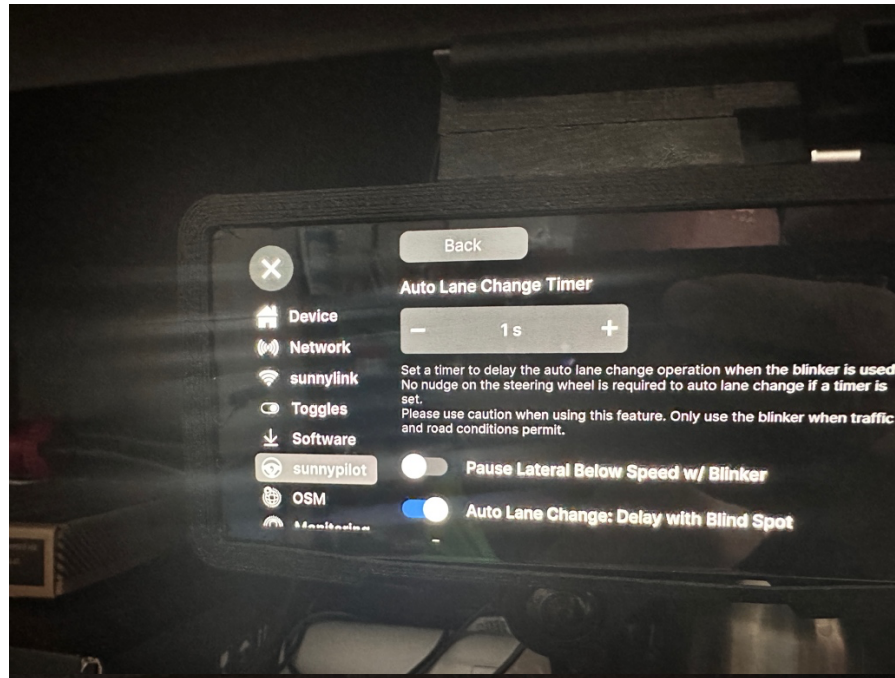


d.

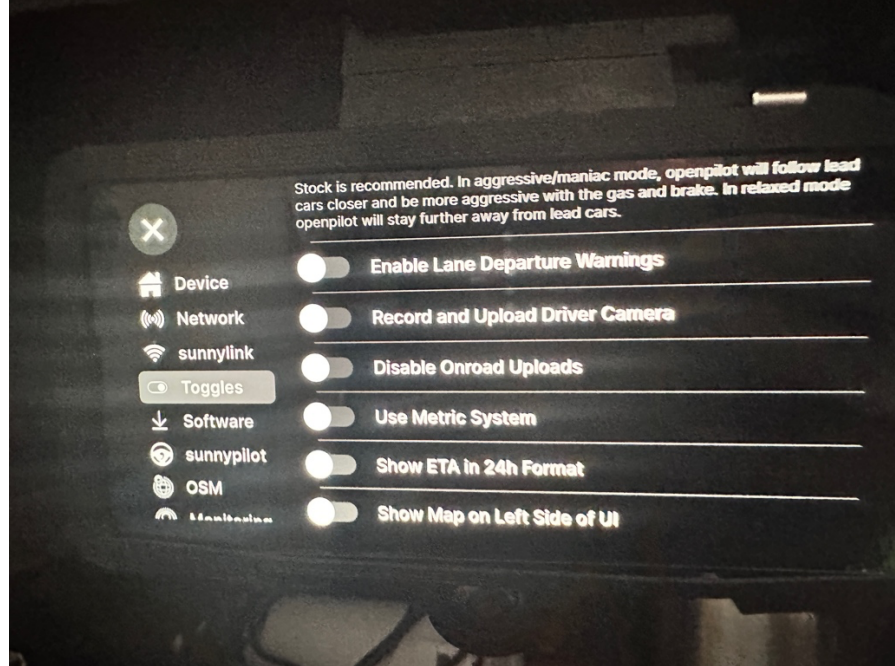


e. Inside Customize Lane Changes:





f.



g.